



United States Department of Agriculture



Natural  
Resources  
Conservation  
Service



# NRCS Programs for Pollinators

Central Coast Beekeepers Monthly Meeting  
Annie Marion • 27 July 2024

Natural  
Resources  
Conservation  
Service

[nrcs.usda.gov/](https://nrcs.usda.gov/)

# History of USDA-NRCS

---

- Soil Conservation Service (1935)
- Natural Resources Conservation Service (1994)
- Soil & Water Conservation Districts



# USDA Farm Bill Programs

## Environmental Quality Incentives Program (EQIP)

- Conservation Implementation Strategies – locally directed focus areas for funding pools
- High Tunnel Initiative, Organic Initiative, Organic Transition Initiative
- Inflation Reduction Act

## EQIP – Conservation Incentive Contract (EQIP-CIC)

- Meant to act as a stepping-stone between EQIP and CSP
- Annual management payments plus associated practices

## Conservation Stewardship Program (CSP)

- Participants earn annual payments to maintain existing conservation systems and adopt additional enhancements to bring their conservation efforts to the next level.

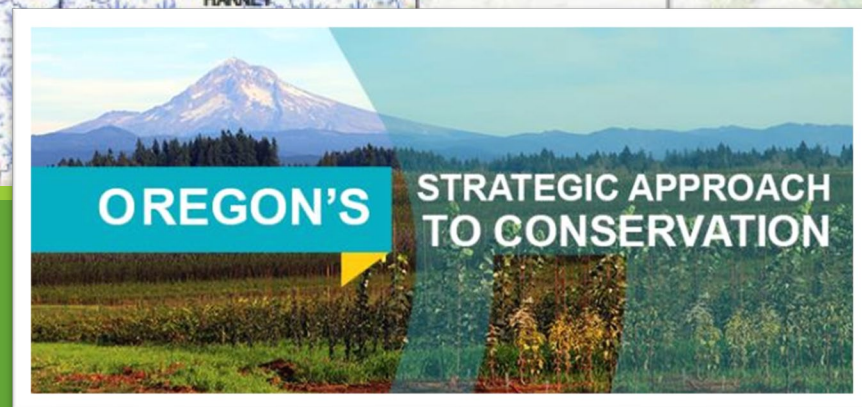
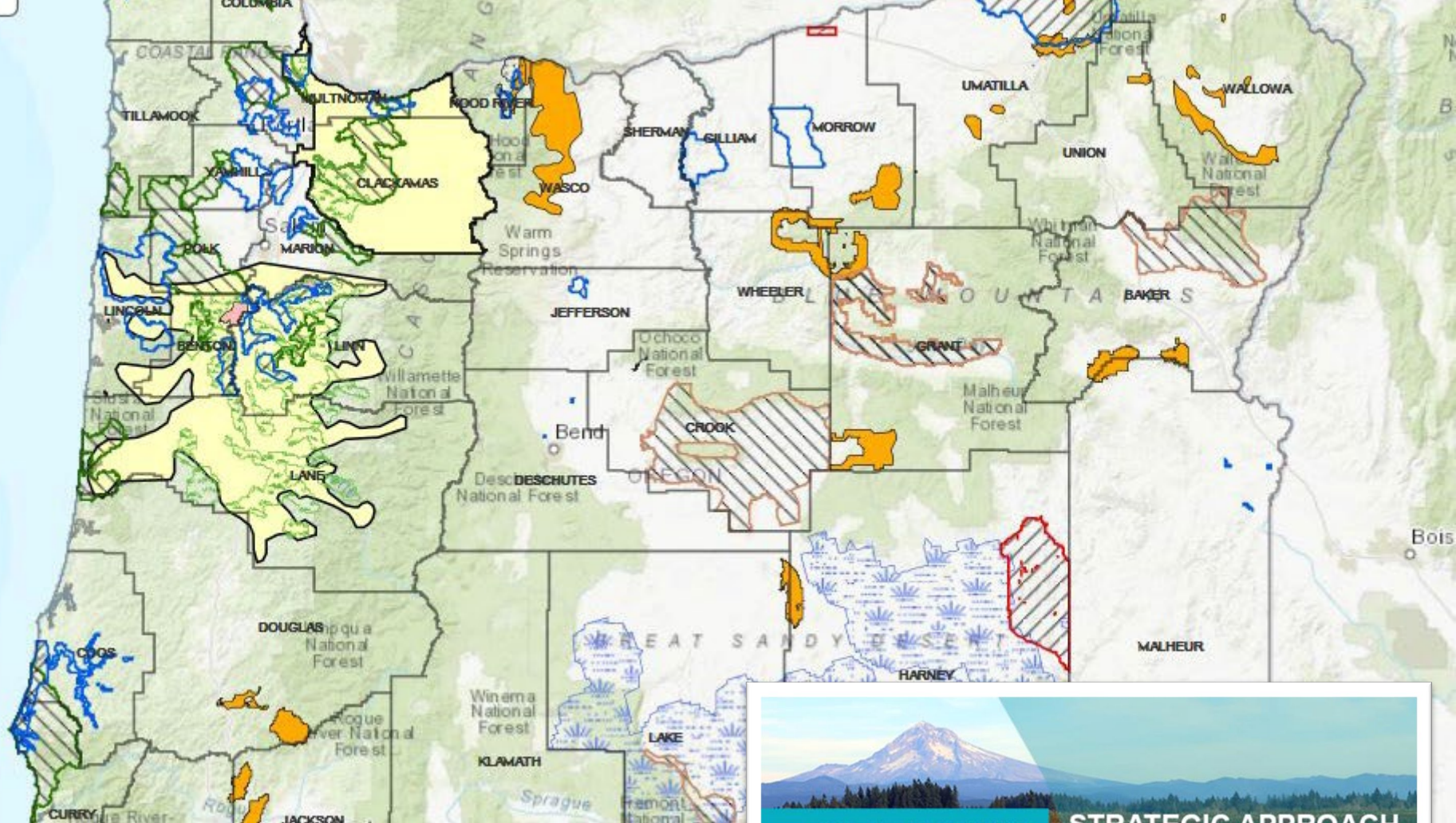
## Conservation Reserve Enhancement Program (CREP)

- Part of the Conservation Reserve Program run by the Farm Service Agency (FSA) – provides annual rental payments to take marginal pastureland out of production to restore degraded riparian zones and wetlands

## Agricultural Conservation Easement Program (ACEP) – Wetland Reserve Easements (WRE) & Healthy Forest Reserve Program (HFRP)

- Protect, restore, and enhance wetlands and forests through conservation easements.





EQIP funding through **Conservation Implementation Strategies (CIS)** to address priority natural resource concerns in specific watersheds and landscapes across the state



# Farm Bill Programs

## Environmental Quality Incentive Program

---

Cost share funding for conservation practices on working lands

- Organic
- Organic Transition



# Practices for pollinators

## cover crop

---

Increase diversity  
with mix of 3 or  
more species or  
with rotating  
winter and  
summer covers





# Top cover crops for pollinators



Buckwheat



Lacy phacelia



Sunflower



Chickling vetch



Safflower



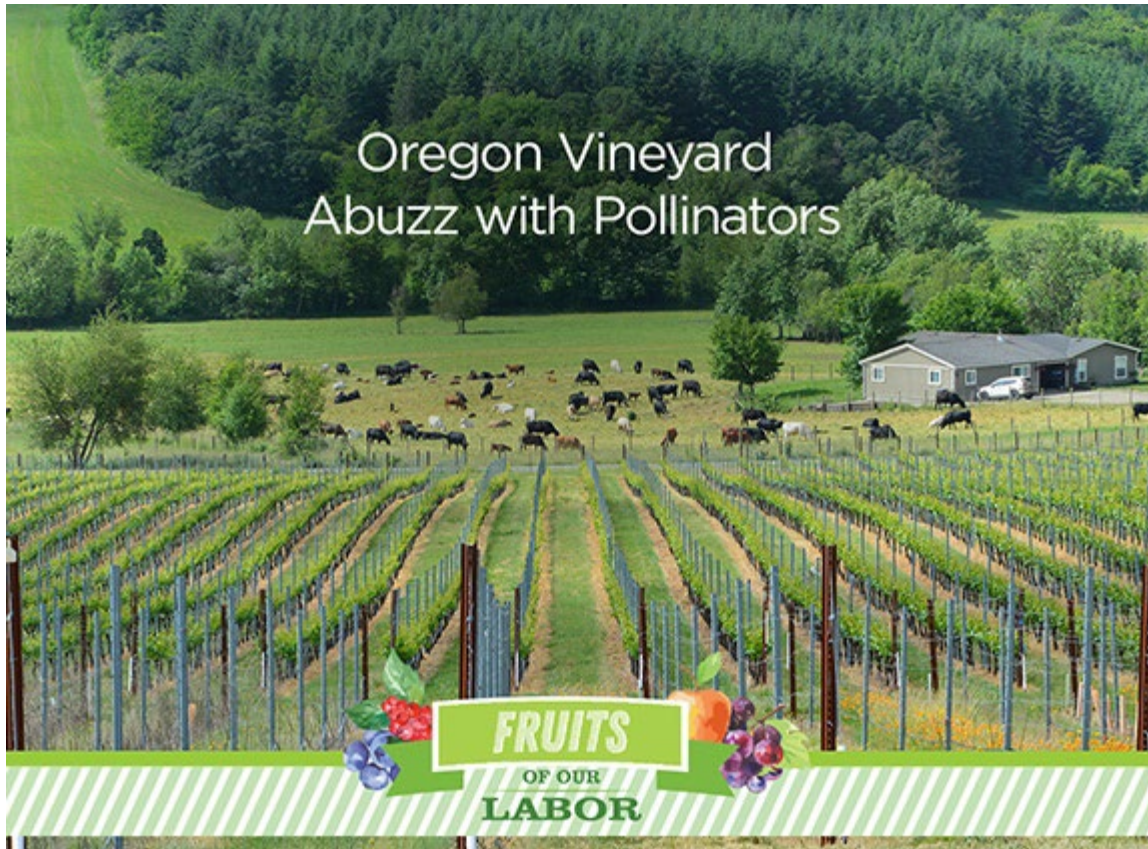
Clovers



Brassicas

# Practices for pollinators conservation cover

---



Permanent  
cover between  
rows in  
vineyards and  
orchards

Can include  
native species



# Practices for pollinators **hedgerow**

---

Pollinators,  
beneficial insects,  
birds, & buffer



# Practices for pollinators **beetle banks**

---

Mounded berm,  
densely-planted to  
perennial bunch grasses

Resting & overwintering  
habitat for beetles,  
spiders and other  
beneficial insects that  
attack crop pests





# Practices for pollinators riparian forest

Native trees and  
shrubs for  
pollinator habitat





# Practices for pollinators wildlife - oak savannah

---



Oak  
understory  
provides  
habitat for  
pollinators  
and other  
wildlife



# Farm Bill Programs

## Conservation Stewardship Program

---



- “Enhancements” available to improve pollinator habitat and extend buffer areas
- Modest annual payments (\$4,000 minimum) for 5 years

# Conservation Reserve Enhancement Program (CREP)

---



- Goal: restore, enhance, and maintain riparian zones in agricultural areas
- Diverse plantings of native trees and shrubs along stream corridors





# Farm Bill Programs

## Agricultural Conservation Easement Program

---



Easements to  
protect farmland or  
restore wetlands

# Practices for pollinators **wetland restoration**

---

Wet  
prairie  
is a  
focus





# Plant Selection Criteria: Site Conditions

- ❖ Precipitation amounts/timing
- ❖ Sunlight/shade
- ❖ Soil texture/depth
- ❖ Drainage - winter ponding/flooding
- ❖ Other site factors (powerlines, underground pipes/lines, property boundaries, right-of-ways, buildings, etc.)



## The Case for Going Native

---

### **Native plants:**

- ❖ Are adapted to the local soils and climate
- ❖ Are not likely to become invasive
- ❖ Generally require less long-term maintenance
- ❖ Co-evolved with local insects and wildlife





## Search for Plants

Start applying characteristics, and the matching plants will appear at right.



### PLANT NEEDS

Sunlight

Select



Moisture

Select



### MATURE SIZE (Just grab the slider handles)

Height

0

50

0 ft - 50+ ft

Width

0

80

0 ft - 80 ft

## Or start with these plant combinations:

### Meadowscape



Filter for these

Learn more

### Pollinator Garden



Filter for these

Learn more

### Rock Garden



Filter for these

Learn more

### Rain & Water Garden



Filter for these

Learn more

## Your search results:

No filters applied, so showing all native plants

View  
as:

List

Sort by  
name:

Scientific



achlys  
*Achlys triphylla*



alder, mountain  
*Alnus incana*



alder, red  
*Alnus rubra*



alder, white  
*Alnus rhombifolia*



alumroot, roundleaf  
*Heuchera cylindrica*

Oregon Flora Gardening with Natives  
[oregonflora.org/garden](https://oregonflora.org/garden)



# Native Annuals for Direct Seeding



Clockwise from top left: miniature lupine, Douglas' meadowfoam, bluehead gilia, large-flowered collomia, rosy seablush, five-spot, baby blue eyes, California poppy, common madia, and farewell to spring



# Native Perennial Forbs for Direct Seeding

## Mid-season

## Late Season



Clockwise from top left: riverbank lupine, Western yarrow, slender cinquefoil, goldenrods, gumweeds, asters, checkermallows, Oregon sunshine, and lanceleaf selfheal



# A Word of Caution About “Native” Pollinator Seed Mixes



**Nature'sSeed™**  
Where do you want to grow?

**Silver Falls**  
SEED COMPANY  
WILDFLOWER • GRASS • NATIVE SEEDS

**HERITAGE**  
seedlings & liners, Inc.

**AMERICAN  
MEADOWS**  
WHERE CONFIDENCE GROWS

**X** **XERCES  
SOCIETY**  
for Invertebrate Conservation



# Native Shrubs/Trees – Propagation by Cuttings



>90%



50-90%



30-50%



Clockwise from top left, >90% group: willows, Pacific ninebark, Douglas spirea, black twinberry, snowberry, and redosier dogwood. 50-90% group: mock orange, salmonberry, red elderberry, and coyotebrush. 30-50% group: osoberry, red flowering currant



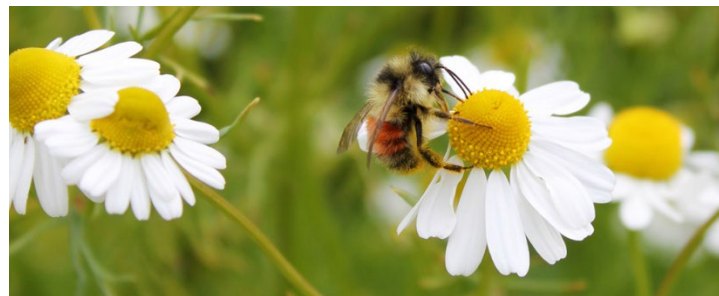
# Native Perennials– Bareroot/Container



Clockwise from top left: Oregon grape, native roses, thimbleberry, evergreen huckleberry, vine maple, cascara, blue elderberry, black chokecherry, native milkweeds, and oceanspray



# Other Non-Native Insectary Plants



Clockwise from top left: cilantro, calendula, lavender, sage, alyssum, chamomile, marigold, borage and other culinary herbs



# Oregon Silverspot Butterfly Conservation

Lincoln Soil & Water Conservation District



Beverly Beach

Newport

Yaquina Bay Lighthouse

## OSB Habitat Corridor Partners Program

Do you own land that checks these boxes?

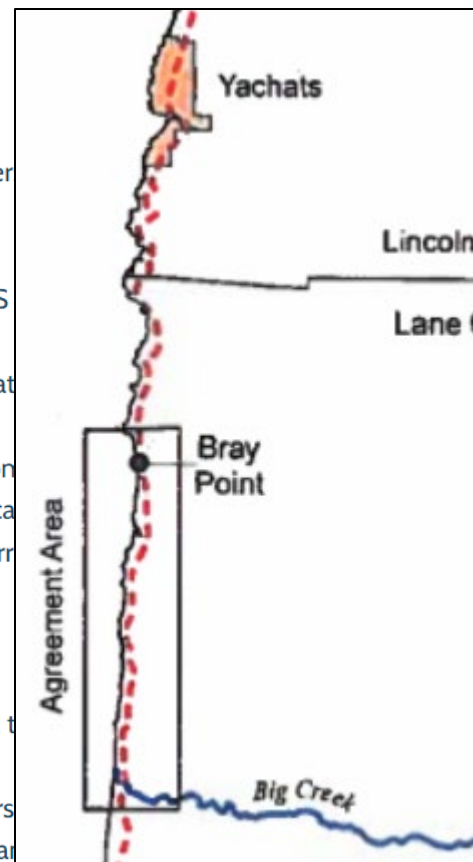
- Beverly Beach to Newport's North Jetty
- Wakonda Beach to Bray Point/Bob Creek
- Within half a mile of the beach
- Has space for a small to moderate sized garden?

Your help may be critical in helping ensure a future for the Oregon Silver Butterfly!

The Lincoln Soil & Water Conservation District is partnering with the US & Wildlife Service as well as local landowners to create new habitat throughout critical portions of the OSB's historic native range in preparation for reintroduction efforts, by forming a new Safe Harbor Agreement Program for this area. As part of these efforts, OSB meadows will be conserved on Sam Moore Park, Camp Gray, and several private properties located in our target area. If you think your property may be right for habitat corridor enhancement, contact us for more details!

### Habitat Surveys

Our staff have partnered with specialists from Oregon State University, the Confederated Tribes of Siletz Indians, Natural Resources Conservation Service, US Fish and Wildlife Services, Mackenzie River Trust, and others to conduct assessment surveys of potential OSB habitat. If you own or manage



# Salt spray seaside meadow restoration

## Safe Harbor Agreement between Lincoln SWCD & USFWS

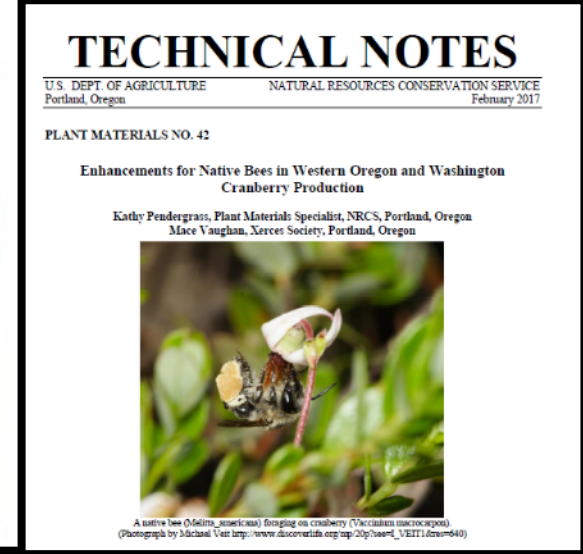
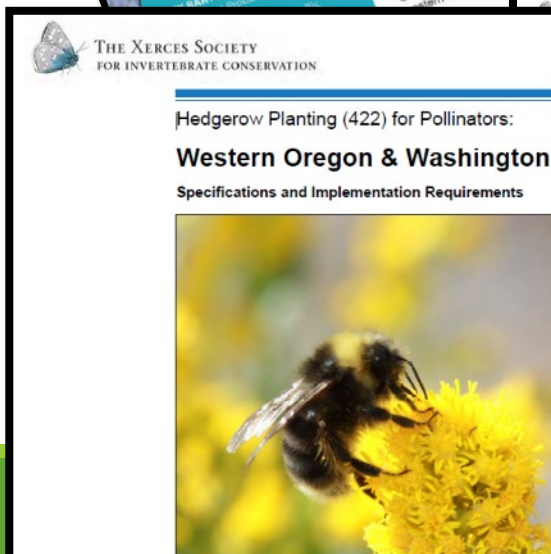
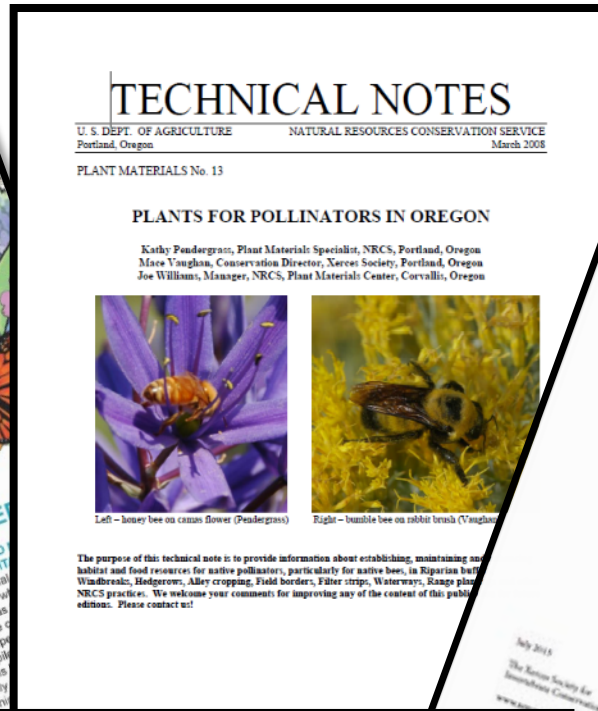


Contact LSWCD at (541) 265-2631 or [info@lincolnsxcd.org](mailto:info@lincolnsxcd.org)  
<http://www.lincolnsxcd.org/osb.html>

Host Plants: Early Blue Violet, Canada Goldenrod, Dune Goldenrod, Pearly Everlasting, California aster, Douglas Aster, Yarrow, Douglas Iris, Dune Thistle



# Publications & Technical Resources



## NRCS Resources for Pollinator Conservation in Oregon

### NRCS Financial Assistance Programs

**Get Started with NRCS:** Information about programs and how to find your local NRCS field office

<https://www.nrcs.usda.gov/wps/portal/nrcs/detailfull/national/newsroom/features/?cid=stelprdb1193811>

**Oregon's Strategic Approach to Conservation:** Find current funding opportunities available in your county

[https://www.nrcs.usda.gov/wps/portal/nrcs/detailfull/or/programs/?cid=nrcs142p2\\_044022](https://www.nrcs.usda.gov/wps/portal/nrcs/detailfull/or/programs/?cid=nrcs142p2_044022)

**Regional Conservation Partnership Program:** Regional collaborative projects funded nationally on an annual basis

<https://www.nrcs.usda.gov/wps/portal/nrcs/main/or/programs/farmbill/rcpp/>

**Conservation Innovation Grants:** National and state-level grants awarded annually to organizations working on creative tools and strategies to support conservation efforts

[https://www.nrcs.usda.gov/wps/portal/nrcs/detail/or/programs/financial/cig/?cid=nrcs142p2\\_044081](https://www.nrcs.usda.gov/wps/portal/nrcs/detail/or/programs/financial/cig/?cid=nrcs142p2_044081)

**National Conservation Work for Honey Bees:** Targeted honey bee effort using 2014 Farm Bill programs for pollinator conservation

<https://www.nrcs.usda.gov/wps/portal/nrcs/detail/national/plantsanimals/pollinate/?cid=stelprdb1263263>

### Plant Materials Information

**Plants for Pollinators in Oregon.** Plant Materials Technical Note No. 13. USDA-NRCS, Portland, OR. 2008. 44 pp.

[https://www.nrcs.usda.gov/Internet/FSE\\_DOCUMENTS/nrcs142p2\\_041919.pdf](https://www.nrcs.usda.gov/Internet/FSE_DOCUMENTS/nrcs142p2_041919.pdf)

**Plants for Pollinators in the Inland Northwest.** Biology Technical Note No. 24. USDA-NRCS, Spokane, WA and Boise, ID.

Revised 2013. 62 pp. [https://www.nrcs.usda.gov/Internet/FSE\\_PLANTMATERIALS/publications/wapmctn11733.pdf](https://www.nrcs.usda.gov/Internet/FSE_PLANTMATERIALS/publications/wapmctn11733.pdf)

**Enhancements for Native Bees in Western Oregon and Washington Cranberry Production.** Plant Materials Technical Note No. 42. USDA-NRCS, Portland, OR. 2017. 20 pp.

[https://www.nrcs.usda.gov/Internet/FSE\\_PLANTMATERIALS/publications/orpmstn13176.pdf](https://www.nrcs.usda.gov/Internet/FSE_PLANTMATERIALS/publications/orpmstn13176.pdf)

**USDA PLANTS Database.** Contains distribution information and Plant Fact Sheets or Plant Guides for many pollinator plants around the country. Searchable by scientific name and common name. <https://plants.usda.gov/java/>

### Xerces Society Guides for NRCS Practices

**Hedgerow Planting (422) for Pollinators:** Western Oregon & Washington Specification and Implementation Requirements.

The Xerces Society for Invertebrate Conservation, Portland, OR. 2013. 16 pp.

[http://www.xerces.org/wp-content/uploads/2013/01/InstallGuideJobSheet\\_WORandWA\\_Hedge.pdf](http://www.xerces.org/wp-content/uploads/2013/01/InstallGuideJobSheet_WORandWA_Hedge.pdf)

**Conservation Cover (327) for Pollinators:** Western Oregon & Washington Specification and Implementation Requirements.

The Xerces Society for Invertebrate Conservation, Portland, OR. 2013. 20 pp.

[http://www.xerces.org/wp-content/uploads/2013/01/InstallGuideJobSheet\\_WORandWA\\_CnsrvCvr.pdf](http://www.xerces.org/wp-content/uploads/2013/01/InstallGuideJobSheet_WORandWA_CnsrvCvr.pdf)

**Pollinator Habitat Assessment Form and Guide:** Farms and Agricultural Landscapes. The Xerces Society for Invertebrate Conservation, Portland, OR. July 2015. 12 pp.

<https://www.xerces.org/wp-content/uploads/2009/11/PollinatorHabitatAssessment.pdf>



# Contact us: "Oregon NRCS My County"

**USDA** Natural Resources Conservation Service  
**Oregon**  
United States Department of Agriculture

About Us | National Centers | State Websites

Topics | Programs | Newsroom | Contact Us

Browse By Audience | A-Z Index | Help

You are Here: [Home](#) / [Programs](#) / What's Available In My County?

Stay Connected     

## Programs

- ☐ Farm Bill
- ☐ Financial Assistance
- ☐ Easements
- ☐ Landscape Initiatives
- ☐ Landscape Planning

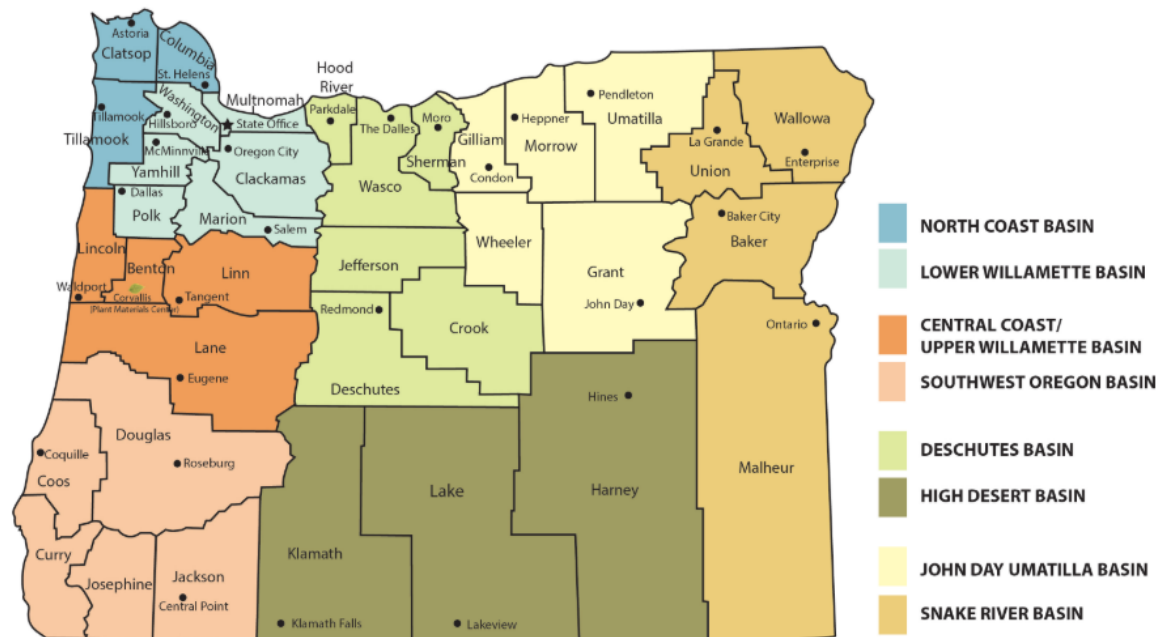


Interactive Map of Current Funding Opportunities

## What's Available In My County?

Please click a county name below to find out what programs and resources are available in your area.

<a href="#">Baker</a>	<a href="#">Columbia</a>	<a href="#">Deschutes</a>	<a href="#">Harney</a>	<a href="#">Josephine</a>	<a href="#">Lincoln</a>	<a href="#">Morrow</a>	<a href="#">Tillamook</a>	<a href="#">Wasco</a>
<a href="#">Benton</a>	<a href="#">Coos</a>	<a href="#">Douglas</a>	<a href="#">Hood River</a>	<a href="#">Klamath</a>	<a href="#">Linn</a>	<a href="#">Multnomah</a>	<a href="#">Umatilla</a>	<a href="#">Washington</a>
<a href="#">Clackamas</a>	<a href="#">Crook</a>	<a href="#">Gilliam</a>	<a href="#">Jackson</a>	<a href="#">Lake</a>	<a href="#">Malheur</a>	<a href="#">Polk</a>	<a href="#">Union</a>	<a href="#">Wheeler</a>
<a href="#">Clatsop</a>	<a href="#">Curry</a>	<a href="#">Grant</a>	<a href="#">Jefferson</a>	<a href="#">Lane</a>	<a href="#">Marion</a>	<a href="#">Sherman</a>	<a href="#">Wallowa</a>	<a href="#">Yamhill</a>



<https://www.nrcs.usda.gov/wps/portal/nrcs/site/or/home/>



A vibrant field of wildflowers, featuring tall yellow stalks and clusters of small yellow blossoms, interspersed with purple flowers in the foreground. The background shows a clear blue sky with scattered white clouds.

# Questions?

Annie Marion

District Conservationist

[Anna.Marion@usda.gov](mailto:Anna.Marion@usda.gov)

(541) 563-5627





### **Non-Discrimination Statement**

In accordance with Federal civil rights law and U.S. Department of Agriculture (USDA) civil rights regulations and policies, the USDA, its Agencies, offices, and employees, and institutions participating in or administering USDA programs are prohibited from discriminating based on race, color, national origin, religion, sex, gender identity (including gender expression), sexual orientation, disability, age, marital status, family/parental status, income derived from a public assistance program, political beliefs, or reprisal or retaliation for prior civil rights activity, in any program or activity conducted or funded by USDA (not all bases apply to all programs). Remedies and complaint filing deadlines vary by program or incident.

Persons with disabilities who require alternative means of communication for program information (e.g., Braille, large print, audiotope, American Sign Language, etc.) should contact the responsible Agency or USDA's TARGET Center at (202) 720-2600 (voice and TTY) or contact USDA through the Federal Relay Service at (800) 877-8339. Additionally, program information may be made available in languages other than English.

To file a program discrimination complaint, complete the USDA Program Discrimination Complaint Form, AD-3027, found online at [How to File a Program Discrimination Complaint](#) and at any USDA office or write a letter addressed to USDA and provide in the letter all of the information requested in the form. To request a copy of the complaint form, call (866) 632-9992. Submit your completed form or letter to USDA by: (1) mail: U.S. Department of Agriculture, Office of the Assistant Secretary for Civil Rights, 1400 Independence Avenue, SW, Washington, D.C. 20250-9410; (2) fax: (202) 690-7442; or (3) email: [program.intake@usda.gov](mailto:program.intake@usda.gov).

USDA is an equal opportunity provider, employer, and lender.

*Helping People Help the Land*